



SADC-CSC EXTREME TEMPERATURE ALERT (CETA)

Issue Number: 2 of 2019/20 Season

Release Date: 28/10/2019

HIGHLIGHTS

HEADLINE: Maximum temperatures reaching the heat wave thresholds are expected in central parts of SADC Region

Persistent temperatures in the range of 30°C to 35°C are expected in bulk of central SADC in the next five days (Figure 1). Parts of central SADC will experience temperatures above 35°C over a consecutive period of three (3) days and occasions where temperatures have a high probability to exceed 40°C, thus reaching the threshold for heatwave alert during the forecast period.

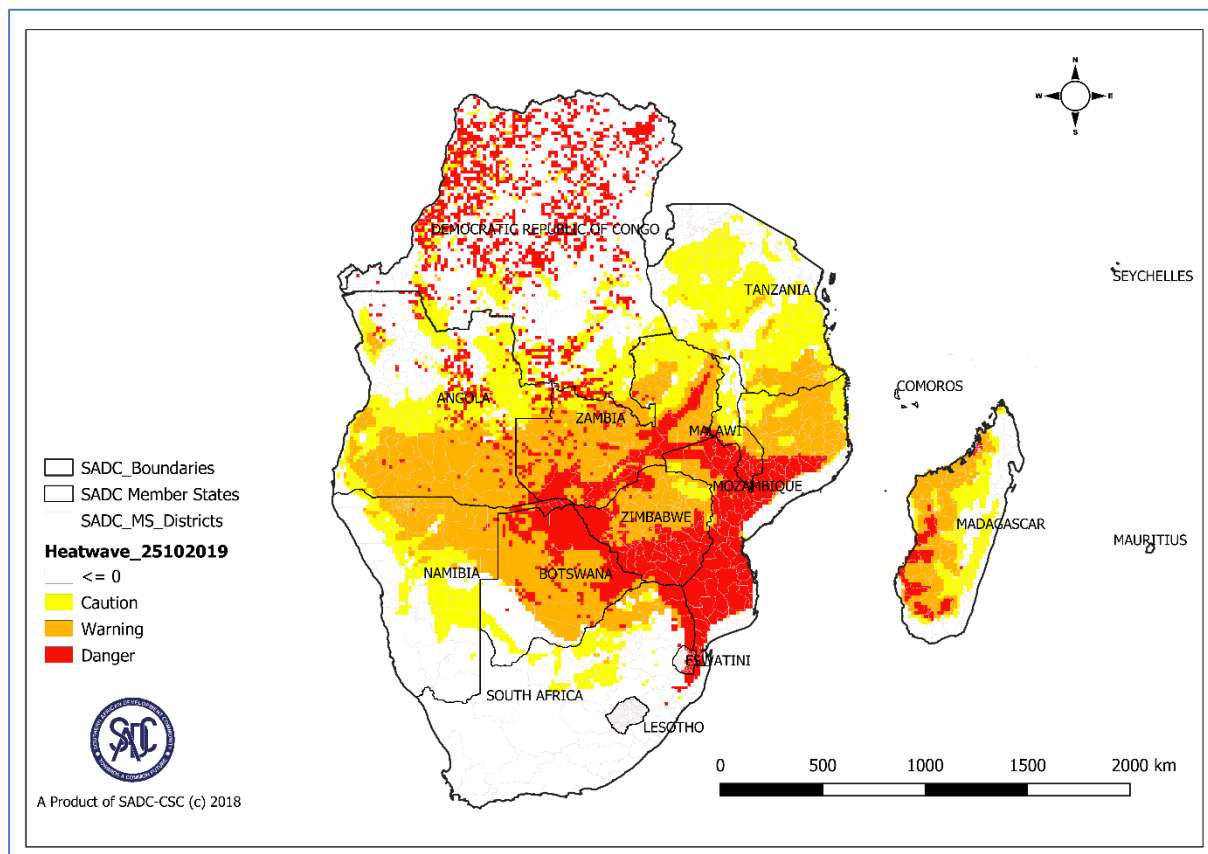


Figure 1: SADC Region’s heatwave and hot temperature warning alert for the period 25-31 October (Source: SADC-CSC-WRF Model)

WARNING ZONE

Extreme south-eastern Angola, north and eastern most parts of Botswana, eastern half of Eswatini, south-western parts of Madagascar, southern Malawi, most of Mozambique, extreme north eastern Namibia, eastern fringes of South Africa, south and eastern Zambia, northern fringes and southern half of Zimbabwe will have a high probability to experience a heatwave during the period of 25 to 31 October 2019 (Figure 3).

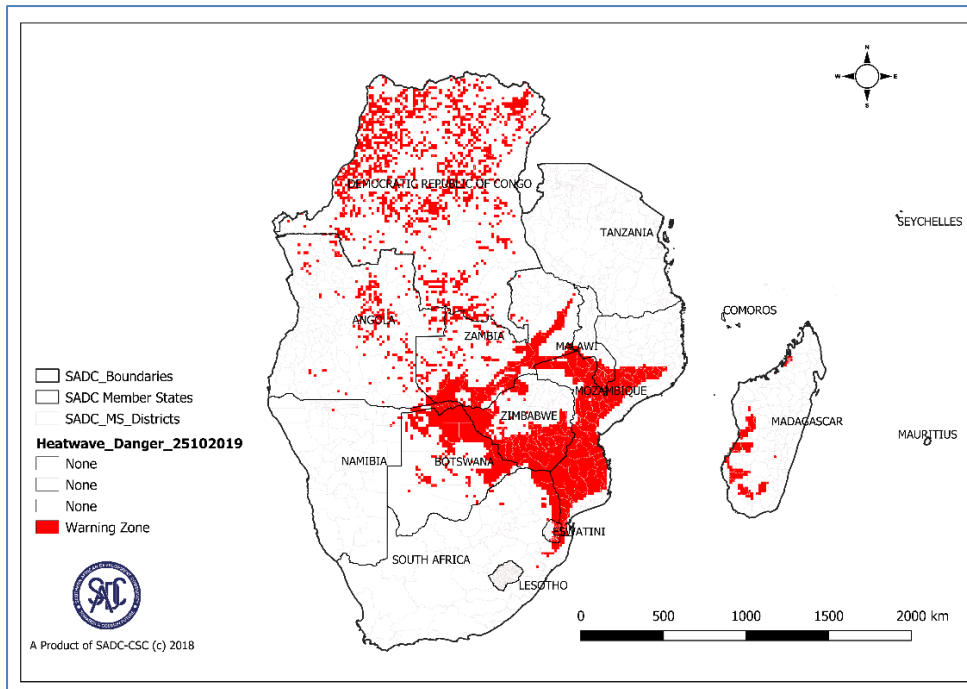


Figure 2: Heat wave Warning Zones forecasted for 25 - 31 October 2019

WATCH ZONE

Most of the central parts of the SADC region stretching from southern Angola through eastern Namibia, Botswana, most of Zambia, Zimbabwe, southern Malawi to northern Mozambique and southern Tanzania are in a Heatwave WATCH category. Western Madagascar is also in a **WATCH** category for a potential heat wave during the forecast period of 25 to 31 October 2019.

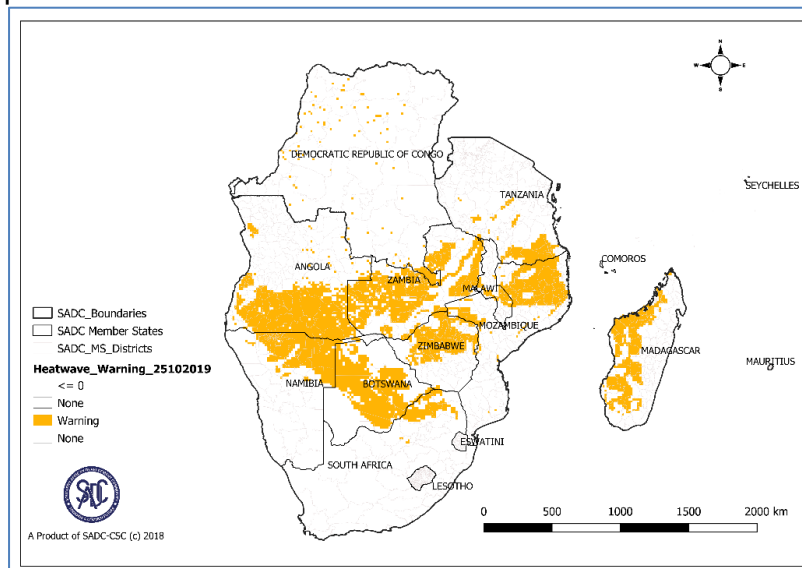


Figure 3: Heatwave Watch Zones forecasted for 25 to 31 October 2019

RECOMMENDED ACTION

For parts of the region where there is a high probability for a heat-wave to be experienced, there is need to adhere to all the health advisories provided by local institutions in Member States. Precautions are advised in these areas to avoid heat related health problems, such as heat stroke amongst others.

Users are encouraged to consult the National Meteorological and Hydrometeorological Services (NMHSs) in the SADC Member States interpretation and the relevant National Institutions.

NEXT ADVICE

The next advisory will be issued dependant on a sustained high temperature forecast expected to occur in more than a single SADC Member State

For more information contact:

SADC Climate Services Centre (SADC-CSC)

Private Bag 0095

Gaborone, Botswana

Email: csc@sadc.int

Website: csc.sadc.int



<https://twitter.com/sadccsc>